







Asian Lupus Summit by the Lupus Academy

Radisson Blu Hotel Cebu
Cebu City, Philippines
31st March to 1st April 2014

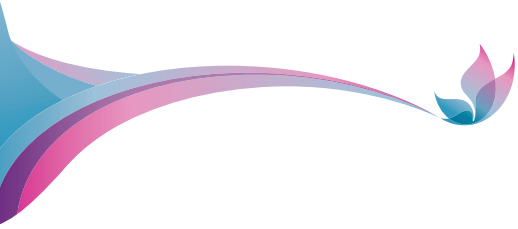
Programme

Monday 31st March 2014

13:00	Registration	
Case Study Workshops		
14:00	<i>Moderator/Facilitator: Lyndon J.Q Llamado (Philippines)</i> Difficult lupus	 Mo-Yin Temy Mok (<i>Hong Kong, China</i>) & Worawit Louthrenoo (<i>Thailand</i>)
	<i>Moderator/Facilitator: Evan Glenn S. Vista (Philippines)</i> Lupus nephritis	 Daniel T.M. Chan (<i>Hong Kong, China</i>) & Yingyos Avihingsanon (<i>Thailand</i>)
	<i>Moderator/Facilitator: Sargunan Sockalingam (Malaysia)</i> Cardiovascular disease in SLE	 Bevra H. Hahn (<i>USA</i>) & Laniyati Hamijoyo (<i>Indonesia</i>)
15:30	Coffee	
Case Study Workshops		
16:00	<i>Moderator/Facilitator: Lyndon J.Q Llamado (Philippines)</i> Difficult lupus	 Mo-Yin Temy Mok (<i>Hong Kong, China</i>) & Worawit Louthrenoo (<i>Thailand</i>)
	<i>Moderator/Facilitator: Evan Glenn S. Vista (Philippines)</i> Lupus nephritis	 Daniel T.M. Chan (<i>Hong Kong, China</i>) & Yingyos Avihingsanon (<i>Thailand</i>)
	<i>Moderator/Facilitator: Sargunan Sockalingam (Malaysia)</i> Cardiovascular disease in SLE	 Bevra H. Hahn (<i>USA</i>) & Laniyati Hamijoyo (<i>Indonesia</i>)
17:30	Close	

Tuesday 1st April 2014

08:00	Opening Address	Roger A. Levy (<i>Brazil</i>)
Plenary I: Moderators: Mandana Nikpour (Australia) & Cesarius Singgih Wahono (Indonesia)		
08:15	Lupus in Asia: unmet needs	Chak-Sing Lau (<i>Hong Kong, China</i>)
08:40	B and T cell cross-talk in SLE	Thomas Dörner (<i>Germany</i>)
09:05	Current concepts in antiphospholipid syndrome	Roger A. Levy (<i>Brazil</i>)
09:30	Discussion	
09:50	Coffee	



Plenary II: Moderators: Thomas Dörner (*Germany*) & Chak-Sing Lau (*Hong Kong, China*)

10:35	Special concerns in children and adolescents	Christine B. Bernal (<i>Philippines</i>)
11:00	Pregnancy and SLE therapy	Aisha Lateef (<i>Singapore</i>)
11:25	Discussion	
11:50	Lunch	

Plenary III: Moderators: Ricard Cervera (*Spain*) & Shue-Fen Luo (*Taiwan*)

13:00	Update on the diagnosis and management of neuropsychiatric SLE	Sargunan Sockalingam (<i>Malaysia</i>)
13:25	Update on the management of lupus nephritis	Daniel T.M. Chan (<i>Hong Kong, China</i>)
13:50	Treat-to-target in SLE	Mandana Nikpour (<i>Australia</i>)
14:15	Discussion	
14:45	Coffee	

Plenary IV: Moderators: Sandra V. Navarra (*Philippines*) & Nan Shen (*China*)

15:10	Optimising outcomes in SLE: best practice	Bevra H. Hahn (<i>USA</i>)
15:35	Advances in SLE therapy	Ricard Cervera (<i>Spain</i>)
16:00	Discussion	
16:20	Summary and close	Sandra V. Navarra (<i>Philippines</i>)